



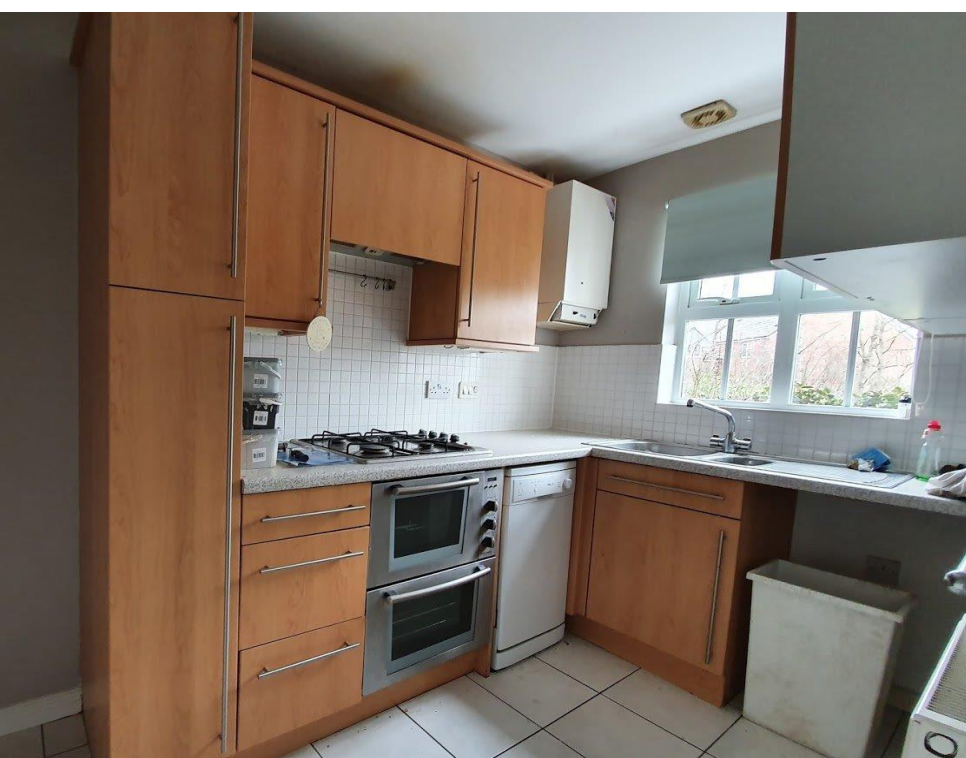
**Jessica Crescent**

Totton, Southampton Totton

**2 Bedrooms  
Cloakroom**

**£1,150 pcm + security  
deposit**





## Jessica Crescent, Totton, Hampshire, SO40 2BP

### Description

- 2 bedrooms
- Kitchen with cooker
- Cloakroom
- UPVC double glazing
- EPC rating: D
- PROPERTY REFERENCE: 1007
- Comfortable reception
- 4-piece bathroom
- Gas Central Heating
- Private parking
- Available 07 July 2024

**Another Parkers' EXCLUSIVE MANAGED PROPERTY! Relax, knowing that our experienced management team respond quickly and efficiently to any maintenance request you make. Our regular property visits offer peace of mind and ensure that the latest safety regulations are always in place.**

**Looking to rent? Make sure it's a Parkers Managed Property!**

We like the modern feel of this 2-bedroom house and its' proximity to Totton's many amenities. The house has a lovely kitchen with double oven and hob integral, and a superb 4-piece bathroom suite with separate shower cubicle. There is also a ground floor cloakroom; convenient and ideal for guests.

Running costs are helped by a modern gas-fired central heating system and decent UPVC double glazing, whilst outside can be found private, allocated parking and a comfortable-size enclosed rear garden.

**Utilities:** The in-going tenant is responsible for gas, electric, water and council tax bills, in addition to any other service to which they contract.

**Deposit:** A deposit of 5 x weeks rent is payable.

**Pets:** We regret that pets are not permitted.

**Energy Performance Rating:** 'D'.

**Council Tax:** Band 'C'. New Forest District Council (Totton & Eling Area) £1,993.38 for year 2024 / 2025.

**Locality:** Totton

Some 3 miles West of Southampton, what used to be the largest village in England has grown to a population of nearly 30,000. However Totton and Eling is still considered a friendly place to live, with excellent shopping and leisure facilities, good schooling, from Infant to Secondary, and within a short drive of Lepe Country Park and a pebble beach at Calshot. Totton is served by the M27 (junctions 2 and 3) and a mainline Railway Station.

**Availability:** Available from 07 July 2024. Please note that an initial term of six months will apply. A reservation for this property can only be made upon the signing of an Agreement to Lease and payment of the holding deposit, equivalent to 1 x week's rent. Our staff are unable to 'keep' or 'hold' a property before this legally-required process has been completed.

**For further information or to view**, please contact sole agents, Parkers Lettings Ltd on 023 8086 8578, quoting property reference 1007

**Directions:** Starting from our offices at 1 Salisbury Road Arcade, Totton, Hampshire, SO40 3SG.

Total : 2 miles (7mins)

1. Drive northwest. (0.08 miles)
2. Turn left onto Salisbury Road/A36. (0.3 miles)
3. Turn left onto Hammonds Lane. (0.2 miles)
4. Turn right onto Water Lane. (0.4 miles)
5. Turn right onto Calmore Road. (0.3 miles)
6. Turn left onto Michigan Way. (0.2 miles)
7. Turn right onto Garland Way. (0.06 miles)
8. Turn left onto Oleander Drive. (0.09 miles)
9. Turn right onto Barberrry Drive. (0.08 miles)
10. Turn right onto Jessica Crescent. (0.01 miles)
11. Turn left. (0.02 miles)
12. Your destination is on the right. (0.00 miles)

**Hours of business:** We're open for business Monday - Friday 9.15am - 5.00pm. Late Wednesday 6.30pm. Saturday, our office is open 10.15am - 1.00pm and 2.00pm - 5.00pm for viewings only. Sunday, Closed.

**A bit about us:** Here at Parkers, we know that you have many options to consider when it comes to choosing an agent, but we like to think that we offer you more than your standard agent.

We're local specialists so when you want lettings, sales and property management services in Totton, Romsey and Southampton, we are second to none. We take immense pride in supporting the local community and playing our part in helping people take the next step in the market. Whether you need advice on where and when to buy-to-let, where to rent or you require assistance in reaching out to prospective buyers and tenants, we can help you. We place a strong emphasis on customer relationships, and we take the time to find out what you want to achieve.

If you're looking to sell your rented property, we're uniquely placed to help with our many hundreds of local landlords. By selling to another investor, it is often possible to keep your tenant in place, ensuring you receive rental income up to the very last day of your ownership, with the buyer receiving a return on their investment from the very next day. Our marketing comprises the best mix of technology, with video tours, floorplans and internet advertising, together with a nod to our heritage with good old fashioned estate agency practices.

We welcome all applicants whether privately funded or in receipt of housing benefit. A minimum household income threshold of 2.5 x the annual rent of the property will apply. This can include paid employment, a pension, investment income, Universal Credit, Child Benefit and child maintenance payments (where an order has been made by The Child Maintenance Service only. Private arrangements of child maintenance payments are not accepted).

For example, if a rent of £800 is agreed, then a minimum household income of £24,000 is required:

$(£800 \times 12 \text{ months}) = £9,600 \text{ per annum. } (£9,600 \times 2.5) = £24,000 \text{ per annum.}$

All applicants must have a clean credit record, and be free of County Court Judgements (CCJs), bankruptcy and Individual Voluntary Arrangements (IVAs).

Some of our landlords' lender or building insurer restrict letting to applicants in receipt of Housing Benefit. Some lenders, such as Cooperative, Barclays are removing this restriction, but for many others it still applies. Please feel free to contact us for further information on this property.



## Accommodation Comprises:

### Hallway

**Kitchen : 6.36' x 10.17' (1.94m x 3.10m)**

Complete with double oven, hob, extractor hood and slimline dishwasher.

**Cloakroom : 3.71' x 5.45' (1.13m x 1.66m)**

Modern suite.

**Lounge/diner : 14.86' x 10.86' (4.53m x 3.31m)**

With doors leading out to the rear garden.

### First Floor

#### Stairwell / Landing

**Bedroom 1 : 12.86' x 7.45' (3.92m x 2.27m)**

Double-size master bedroom with built-in wardrobes and chest of drawers.

**Bedroom 2 : 14.86' x 7.15' (4.53m x 2.18m)**

**Bathroom : 6.36' x 6.43' (1.94m x 1.96m)**

Modern white-coloured 4-piece bathroom suite comprising bath, shower cubicle, sink and WC.

### External

Private parking to the front of the property for 1 vehicle. Further on-road parking is available. The rear garden is of a manageable size and fully enclosed.

### Tenant Fees

From 01/06/2019

Tenants (Housing Act tenancies)

Permitted default payments:

Loss of keys / security device: Cost of replacement only, plus agent's reasonable costs in arranging.


Variation, assignment or novation to the lease: The greater of £50 including VAT or the reasonable costs.

Rent arrears: Interest accrues from day one, if the rent is not paid within 14 days of the due date. The interest is limited to 3% over base rate.


Early release of tenancy: £780 including VAT.

Parkers Lettings Ltd and members of The Property Redress Scheme and Client Money Protect.

# Energy Efficiency Rating

	Current	Potential
Very energy efficient - lower running costs		
(92-100) <b>A</b>		92
(81-91) <b>B</b>		
(69-80) <b>C</b>		
(55-68) <b>D</b>	68	
(39-54) <b>E</b>		
(21-38) <b>F</b>		
(1-20) <b>G</b>		
Not energy efficient - higher running costs		
England	EU Directive 2002/91/EC	

# Environmental Impact (CO<sub>2</sub>) Rating

	Current	Potential
Very environmentally friendly - lower CO <sub>2</sub> emissions		
(92-100) <b>A</b>		93
(81-91) <b>B</b>		
(69-80) <b>C</b>	72	
(55-68) <b>D</b>		
(39-54) <b>E</b>		
(21-38) <b>F</b>		
(1-20) <b>G</b>		
Not environmentally friendly - higher CO <sub>2</sub> emissions		
England	EU Directive 2002/91/EC	



The logo for Parkers Lettings, featuring the word "PARKERS" in a bold, black, sans-serif font, oriented vertically on the left side of a white square. To the right of the text is a solid orange trapezoidal shape. The entire logo is enclosed within a thick black border.

**PARKERS**

1, Salisbury Road Arcade, Totton  
SOUTHAMPTON, SO40 3SG

**telephone : 023 8086 8578**

**email : [info@parkersletttings.com](mailto:info@parkersletttings.com)**

**[parkersletttings.com](http://parkersletttings.com)**

THE PROPERTY MISDESCRIPTIONS ACT 1991: Any areas, measurements or distances are approximate. Land measurements are provided by the vendor and buyers are advised to obtain verification from their solicitor. The text, photographs and plans are for guidance only and are not necessarily comprehensive. Items shown in the property photographs are not included unless specifically mentioned within the sales particulars although they may be available by separate negotiation. Parkers Lettings Limited cannot verify that the fixtures and fittings, equipment or services are in working order or fit for the purpose and buyers are advised to obtain verification from their solicitor. The tenure of a property is based upon information supplied by the seller and buyers are advised to obtain verification from their solicitor.