



Rumbridge Street

2 Bedroom £950 pcm + security deposit

Totton, Hampshire





68b Rumbridge Street

Description

- 2 bedrooms
- Private off-road parking
- Spacious fitted kitchen
- EPC Rating: D
- PROPERTY REF: 1951
- Gas Central Heating
- Modern white bathroom
- Convenient, central location
- Available 15 October 2025

Another Parkers' EXCLUSIVE MANAGED PROPERTY! Relax, knowing that our experienced management team respond quickly and efficiently to any maintenance request you make. Our regular property visits offer peace of mind and ensure that the latest safety regulations are always in place.

Looking to rent? Make sure it's a Parkers Managed Property!

A 2-bedroom first floor maisonette. The property has gas central heating, a white bathroom suite and a spacious fitted kitchen.

The property is centrally located and with all amenities close to hand. There is private parking for one car to the rear of the property.

Utilities: The in-going tenant is responsible for gas, electric, water and council tax bills, in addition to any other service to which they contract.

Deposit: A deposit of 5 x weeks rent is payable.

Pets: We regret that pets are not permitted.

Energy Performance Rating: 'D'.

Council Tax: Band 'A'. New Forest District Council (Totton & Eling Area) £1,571.08 for year 2025/2026.

Availability: Available 15/10/2025. Please note that an initial term of six months will apply. A reservation for this property can only be made upon the signing of an Agreement to Lease and payment of the holding deposit, equivalent to 1 x week's rent. Our staff are unable to 'keep' or 'hold' a property before this legally-required process has been completed.

For further information or to view, please contact sole agents, Parkers Lettings Ltd on 023 8086 8578, quoting property reference 1951.



Accommodation Comprises:

External Staircase
With front door leading to:

Kitchen
Good-size fitted kitchen, with plenty of storage and work-surface. Electric cooker to remain. Wall-mounted gas-fired boiler for the central heating and hot water.

Inner Hallway
With doors to all rooms.

Living Room
Comfortable and spacious reception room.

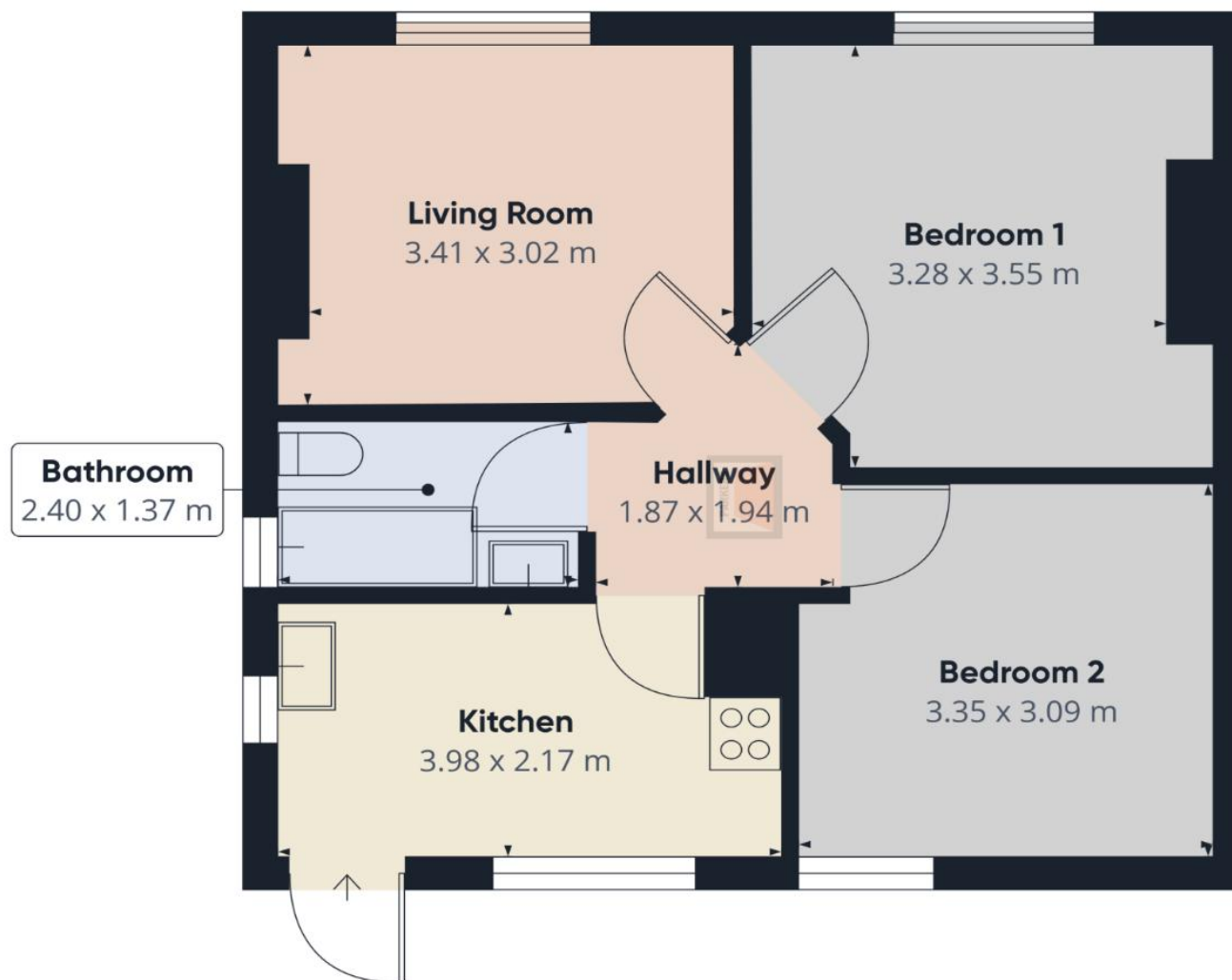
Bedroom 1
Spacious main bedroom.

Bedroom 2
Good-size second bedroom.

Bathroom
Modern, white bathroom suite, with mixer hand-held shower over the bath.

Parking
Generous, allocated parking space for one car.





Approximate total area⁽¹⁾
48.10 m²

(1) Excluding balconies and terraces

While every attempt has been made to ensure accuracy, all measurements are approximate, not to scale. This floor plan is for illustrative purposes only.

GIRAFFE360

Certificate Number : 0360-2698-8240-2327-0631

Score	Energy rating	Current	Potential
92+	A		
81-91	B		
69-80	C		69
55-68	D	66	
39-54	E		
21-38	F		
1-20	G		

<https://find-energy-certificate.digital.communities.gov.uk/energy-certificate/0360-2698-8240-2327-0631>

Our Fees

We require a Holding Deposit equal to 1 week's rent (approx £219.23) to secure the property. This holding deposit will be used towards the security deposit and rent in advance if the tenancy proceeds.

This property requires a Security Deposit of 5 week's rent (approx £1096.15)

The following fees may also be charged during your tenancy

Lost/replacement keys/security fobs
Rent arrears fees/charges
Change of tenancy

THE PROPERTY MISDESCRIPTIONS ACT 1991: Any areas, measurements or distances are approximate. Land measurements are provided by the vendor and buyers are advised to obtain verification from their solicitor. The text, photographs and plans are for guidance only and are not necessarily comprehensive. Items shown in the property photographs are not included unless specifically mentioned within the sales particulars although they may be available by separate negotiation. Parkers Lettings Limited cannot verify that the fixtures and fittings, equipment or services are in working order or fit for the purpose and buyers are advised to obtain verification from their solicitor. The tenure of a property is based upon information supplied by the seller and buyers are advised to obtain verification from their solicitor.

PARKERS

1, Salisbury Road Arcade, Totton
SOUTHAMPTON, SO40 3SG

telephone : 023 8086 8578

email : info@parkerslettings.com

parkerslettings.com