



22-24 Commercial Road

Totton, Hampshire

**Beautiful 1- Bedroom
apartment**

£895 pcm + security deposit





Flat 4, 22-24 Commercial Road, Totton, Hampshire, SO40 3BY

Description

- Stunning 1- bedroom apartment
- Security entry-phone system
- Well-appointed shower room
- Exceptional standard of finish
- PROPERTY REF: 2408
- Spacious 72m sq. accommodation
- New kitchen - All white goods
- Gas Central Heating
- Energy Rating : C
- Available now

Another Parkers' **EXCLUSIVE MANAGED PROPERTY!** Relax, knowing that our experienced management team respond quickly and efficiently to any maintenance request you make. Our regular property visits offer peace of mind and ensure that the latest safety regulations are always in place.

Looking to rent? Make sure it's a Parkers Managed Property!

A beautiful light and airy 1-bedroom apartment located in the heart of the town. This unfurnished property offers very spacious living accommodation, a well-appointed kitchen with modern appliances including a washer / dryer and dishwasher, and a contemporary shower room, complete with those special finishing touches, such as a lit vanity mirror. The apartment benefits from gas central heating and holds an energy rating of 'C', ensuring warmth and efficiency throughout the year.

Ideal for professionals or couples seeking a convenient location with easy access to local amenities, Early viewing is highly recommended to fully appreciate the quality and finish of this delightful home.

Utilities: The in-going tenant is responsible for gas, electric, water and council tax bills, in addition to any other service to which they contract.

Deposit: A deposit of 5 x weeks rent is payable.

Pets: We regret that pets are not permitted.

Energy Performance Rating: 'C'.

Council Tax Band: New Forest District Council - Yet to be assessed.

Locality: Totton

Some 3 miles West of Southampton, what used to be the largest village in England has grown to a population of nearly 30,000. However Totton and Eling is still considered a friendly place to live, with excellent shopping and leisure facilities, good schooling, from Infant to Secondary, and within a short drive of Lepe Country Park and a pebble beach at Calshot. Totton is served by the M27 (junctions 2 and 3) and a mainline Railway Station.

Availability: Available immediately. Please note that an initial term of six months will apply. A reservation for this property can only be made upon the signing of an Agreement to Lease and payment of the holding deposit, equivalent to 1 x week's rent. Our staff are unable to 'keep' or 'hold' a property before this legally-required process has been completed.

For further information or to view: Please contact sole agents, Parkers Lettings Ltd on 023 8086 8578, quoting property reference 2408.

Directions: Starting from our offices at 1 Salisbury Road Arcade, Totton, Hampshire, SO40 3SG. 3 minute walk.

1. Proceed in a Southerly direction down Salisbury Road.
2. Cross Library Road to Totton Shopping Centre.
3. Cross Commercial Road.
4. The property is to your right, where our friendly agent will meet you.

Hours of business: We're open for business Monday - Friday 9.00am - 4.30pm.

A bit about us: Here at Parkers, we know that you have many options to consider when it comes to choosing an agent, but we like to think that we offer you more than your standard agent. We're local specialists so when you want lettings, sales and property management services in Totton, Romsey and Southampton, we are second to none. We take immense pride in supporting the local community and playing our part in helping people take the next step in the market.

Whether you need advice on where and when to buy-to-let, where to rent or you require assistance in reaching out to prospective buyers and tenants, we can help you. We place a strong emphasis on customer relationships, and we take the time to find out what you want to achieve.

If you're looking to sell your rented property, we're uniquely placed to help with our many hundreds of local landlords. By selling to another investor, it is often possible to keep your tenant in place, ensuring you receive rental income up to the very last day of your ownership, with the buyer receiving a return on their investment from the very next day. Our marketing comprises the best mix of technology, with video tours, floorplans and internet advertising, together with a nod to our heritage with good old fashioned estate agency practices.

We welcome all applicants whether privately funded or in receipt of housing benefit. A minimum household income threshold of 2.5 x the annual rent of the property will apply. This can include paid employment, a pension, investment income, Universal Credit, Child Benefit and child maintenance payments (where an order has been made by The Child Maintenance Service only. Private arrangements of child maintenance payments are not accepted).

For example, if a rent of £800 is agreed, then a minimum household income of £24,000 is required:

$(£800 \times 12 \text{ months}) = £9,600 \text{ per annum. } (£9,600 \times 2.5) = £24,000 \text{ per annum.}$

All applicants must have a clean credit record, and be free of County Court Judgements (CCJs), bankruptcy and Individual Voluntary Arrangements (IVAs).

Some of our landlords' lender or building insurer restrict letting to applicants in receipt of Housing Benefit. Some lenders, such as Cooperative, Barclays are removing this restriction, but for many others it still applies. Please feel free to contact us for further information on this property.



Accommodation Comprises

Entrance Hallway : 9.06' x 7.97' (2.76m x 2.43m)

Welcoming entrance, with doors to the Living room, Bedroom and Bathroom. Wood-effect flooring.

Living Room : 16.01' x 14.27' (4.88m x 4.35m)

Measurement into bay.

Large, spacious and able to accommodate a variety of furniture layouts. Attractive walk-in bay window, built-in cupboard housing boiler. Open to:

Kitchen : 9.42' x 7.97' (2.87m x 2.43m)

Brand new fitted kitchen featuring a good range of storage cupboards, and ample work-surface space. Integral oven, hob, extractor, washer / dryer, dishwasher and fridge / freezer.

Bedroom : 13.88' x 16.01' (4.23m x 4.88m)

Large double bedroom, with an extensive range of built-in wardrobes.

Shower Room : 7.87' x 6.23' (2.40m x 1.90m)

Brand new and beautifully-appointed, with a large shower cubicle, with thermostatic shower, vanity wash basin, with storage under, and WC.

Tenant Fees

From 01/06/2019

Tenants (Housing Act tenancies)

Permitted default payments:

Loss of keys / security device: Cost of replacement only, plus agent's reasonable costs in arranging.

Variation, assignment or novation to the lease: The greater of £50 including VAT or the reasonable costs.

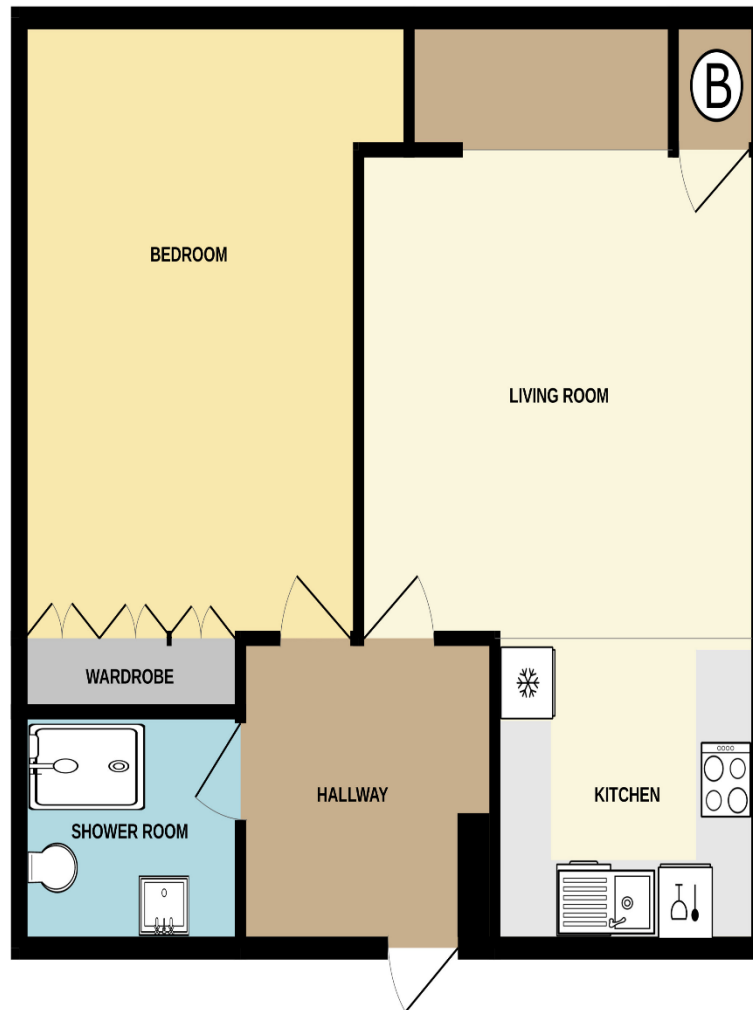
Rent arrears: Interest accrues from day one, if the rent is not paid within 14 days of the due date. The interest is limited to 3% over base rate.

Early release of tenancy: £780 including VAT.

Parkers Lettings Ltd and members of The Property Redress Scheme and Client

Money Protect.

FIRST FLOOR FLAT
775 sq.ft. (72.0 sq.m.) approx.



FIRST FLOOR FLAT

TOTAL FLOOR AREA: 775sq.ft. (72.0 sq.m.) approx.

Whilst every attempt has been made to ensure the accuracy of the floorplan contained herein, measurements of doors, windows, rooms and any other items are approximate and no responsibility is taken for any error, omission or mis-statement. This plan is for illustrative purposes only and should be used as such by any prospective purchaser. The services, systems and appliances shown have not been tested and no guarantee as to their operability or efficiency can be given.
Made with Metropix 62025

Certificate Number : 2014-3007-6305-7105-3200

Score	Energy rating	Current	Potential
92+	A		
81-91	B		
69-80	C	79	79
55-68	D		
39-54	E		
21-38	F		
1-20	G		

<https://find-energy-certificate.digital.communities.gov.uk/energy-certificate/2014-3007-6305-7105-3200>



1, Salisbury Road Arcade, Totton
SOUTHAMPTON, SO40 3SG
telephone : 023 8086 8578
email : info@parkersletttings.com
parkersletttings.com



THE PROPERTY MISDESCRIPTIONS ACT 1991: Any areas, measurements or distances are approximate. Land measurements are provided by the vendor and buyers are advised to obtain verification from their solicitor. The text, photographs and plans are for guidance only and are not necessarily comprehensive. Items shown in the property photographs are not included unless specifically mentioned within the sales particulars although they may be available by separate negotiation. Parkers Lettings Limited cannot verify that the fixtures and fittings, equipment or services are in working order or fit for the purpose and buyers are advised to obtain verification from their solicitor. The tenure of a property is based upon information supplied by the seller and buyers are advised to obtain verification from their solicitor.